

EJOT®

JH JamesHardie™

Rainscreen Facades



One vision. One solution.

EJOT LT-TD System meets Hardie® Panel and
Hardie® Architectural Panel

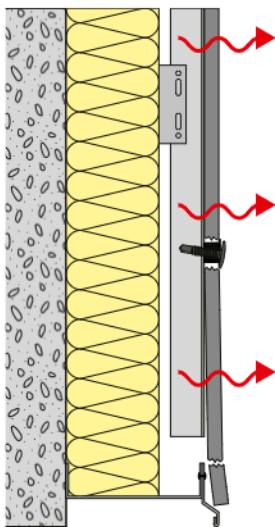
EJOT. Bringing it together.

The operating principle – details make the difference

Two serious and regularly occurring problems with rear-ventilated facades using fibre cement panels could soon be a thing of the past: no more unsightly light marks on the facade panels in the area of the

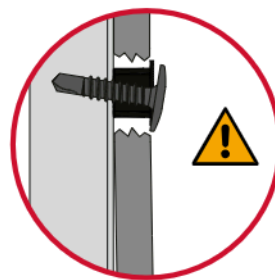
substructure and no more broken panels at the fixing points. The new, patented LT-TD System from EJOT fundamentally eliminates these weak points.

Standard System



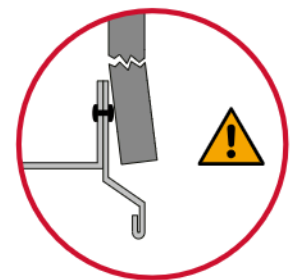
Thermal coupling

Direct contact of the support profile with the facade cladding leads to weather-related markings of the profile positions on the surface of the facade cladding.



Angled screw connection

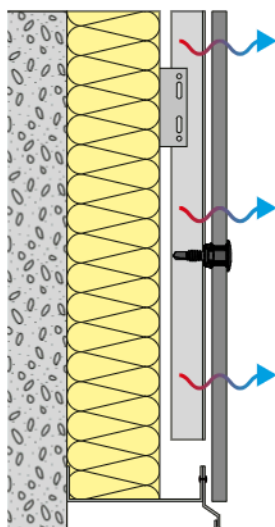
A non-perpendicular screw connection can have a negative effect on the sliding point and cause the facade cladding to break.



Ventilation grille narrow point

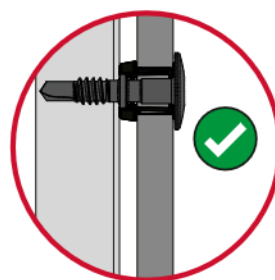
The corner areas of the facade cladding are particularly sensitive. The attachment points of ventilation grilles and end profiles can generate stresses and cause the facade cladding to break.

LT-TD System



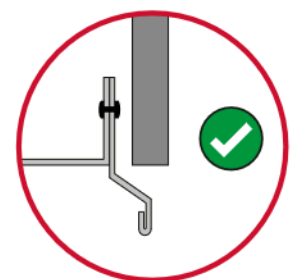
Thermal decoupling

The support profile has a 3 mm gap to the facade cladding and is therefore thermally decoupled. The surface of the facade cladding remains visually appealing in the long term.



Perpendicular screw connection

The perpendicular alignment of the screw guarantees an optimum sliding point with a relative displacement (dilation) of 3 mm in all directions.



Space for ventilation grille

The attachment points of ventilation grilles and end profiles have no contact with the facade cladding due to the second rear ventilation level.

TOGETHER WE INNOVATE, SOLVE AND BUILD.

Tested, trusted, and ready

James Hardie has internally verified and tested the **new EJOT LT-TD System** for fixing and sliding points in facade panel installations. Although the LT-TD System is not a Hardie™ product, its use with the Hardie® Panel 8 mm thick facade cladding range is fully covered under our 15-year warranty – giving

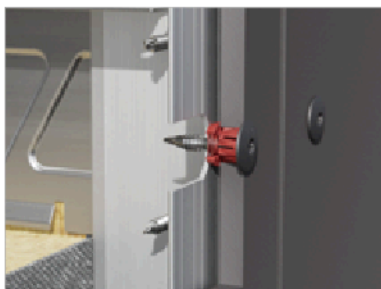
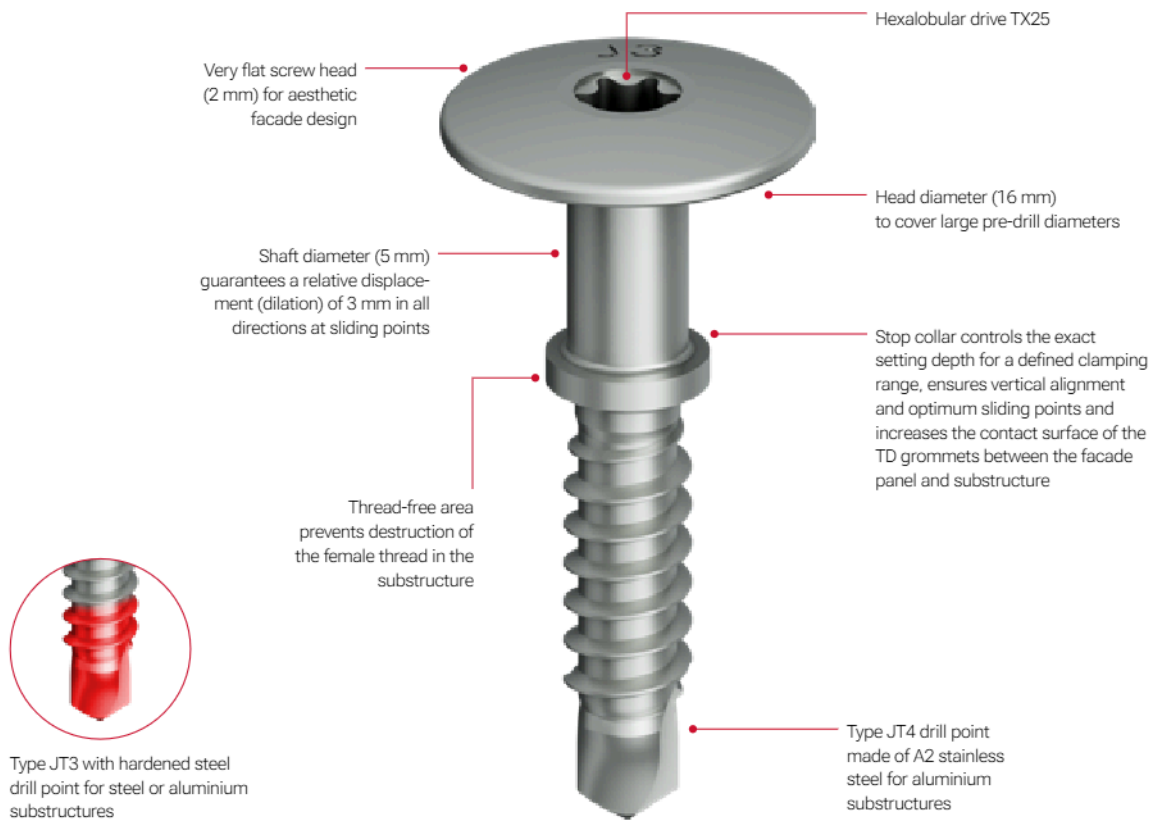
architects and installers the assurance they need when specifying and installing our products. Whether you're designing a sleek urban facade or a resilient public building, Hardie® Panel combined with EJOT's precision-engineered fixing system offers a complete solution that's tested, trusted, and ready to perform.

LT-TD System

A revolution in the visible fastening of rainscreen facade claddings

The EJOT Construction Division caters to selected segments of the building industry. This includes professional applications on building facades and installation solutions for technical facilities inside the building. Main products are drilling and sealing screws, anchors, mounting elements and profiles for External Thermal Insulation Composite Systems (ETICS), chemical and mechanical anchors as well as fasteners for flat roofs and solar applications.

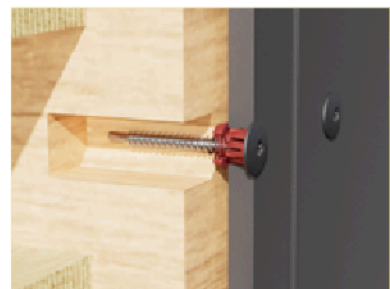
With the LT-TD System, EJOT has revolutionised the visible fastening of rainscreen facade cladding: TD (thermal distance) means thermal decoupling by creating a 3.0 millimetre air gap between the facade cladding and the substructure. This additional rear ventilation within the rainscreen facade interrupts the heat flow from the inside of the building to the panel surface and ensures that the facade dries evenly. The result is a durable, attractive facade without marking of the substructure.



Type JT4-LT-TD-3-5,5x28/8 with drill point made of A2 stainless steel for aluminium substructures



Type JT3-LT-TD-3-5,5x32/8 with hardened steel drill point for steel or aluminium substructures



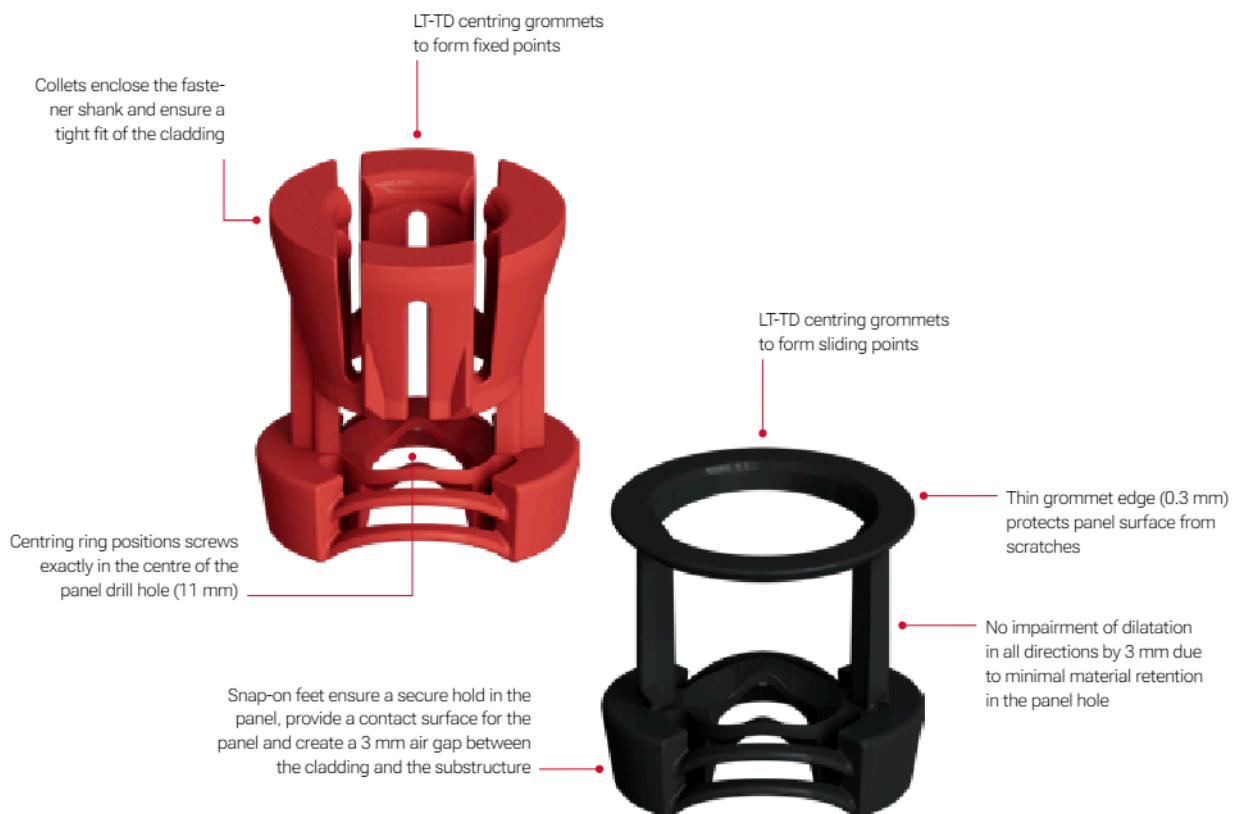
Type JT4-LT-2/6-6,0x50 with drill point made of A2 stainless steel for timber substructures



Detail view of fixed point for LT-TD System



Detail view of sliding point for LT-TD System



Installation tool



LT/STS Tool plastic

More information on LT-TD System

A new system for the visible fastening of facade panels





Hardie® Panel and Hardie® Architectural Panel

An outstanding solution

James Hardie is a global leader in fibre cement technology, renowned for delivering robust, low-maintenance facade solutions that meet the demands of modern architecture. Our Hardie® Panel product range offers a versatile, non-combustible facade cladding solution that combines aesthetic flexibility with long-term performance for contemporary rainscreens facades.

A modern look

Hardie® Panel comes in a natural fibre cement texture, that also builds the baseline for our unique Hardie® Architectural Metallics range.

Hardie® Panel and Hardie® Architectural Panel are some of the most innovative products when it comes to fibre cement cladding. They do not only impress with performance but are also a real design all-rounder: pick any of our amazing colours or your individual one, choose a texture and make every project individual.

Hardie® Architectural Panel is available in a brushed concrete and a smooth sand look.

Hardie® Panel



Hardie® Architectural Panel (Metallics)



Hardie® Architectural Panel (Brushed Concrete and Smooth Sand)



Not the right colour for you?

Hardie® Panel and Hardie® Architectural Panel facade claddings are available in custom colours – chosen from your favourite colour systems like RAL or NCS – for unique buildings and maximum design flexibility.

Innovative product design meets

Project Support

Our dedicated team of Hardie® Panel experts has extensive experience and specialised knowledge to support your project. Trust our fibre cement products, knowing that you have made the best choice.

Contact them at www.jameshardie.eu/contact.

Find all technical documents

www.jameshardie.eu/en/downloads



Order your Hardie® Panel sample now

www.jameshardie.eu/en/panel-sample-request





EJOT SE & Co. KG

Market Unit Construction

In der Stockwiese 35
57334 Bad Laasphe · Germany
T +49 2752 908-0
F +49 2752 908-731
construction@ejot.com
www.ejot.com/construction



James Hardie Europe GmbH

Export Department

Bennigsen-Platz 1
40474 Düsseldorf · Germany
T +49 211 54236-200
export-jheu@jameshardie.com
www.jameshardie.eu

© 2025 James Hardie Europe GmbH.
Unless otherwise noted, ™ and ® denote unregistered
and registered trademarks of James Hardie Techno-
logy Limited and James Hardie Europe GmbH.